



A range of epoxy painted steel stackers with manual or electric lift, designed to ensure ergonomics and safety for professionals.

Available with a capacity of 300 or 600 kg and with several versions of side rails: standard, framed and pallet pass.

Functional and modular, they can be combined with a wide range of accessories for drums, bins, reels, etc.

Performance

- Robust construction suitable for intensive use.
- Manual model: 2 lifting speeds, foot-operated cylinder.
- 300 kg semi-electric model: 2 x 12 V 22 Ah battery, 12h autonomy with 10 cycles/h for a 300 kg load for use between 10 and 20°, 4h charge time for 80% and 8h for 100%.
- Semi-electric model 600 kg: AGM battery 2 x 12 V 22 Ah, autonomy of 6h with 10 cycles/h for a 600 kg charge for use between 10 and 20°, charging time of 4h for 80% and 8h for 100%.

Versatility

- Kit for quick change of accessories for the 300 kg model.
- Possibility of conversion from manual to electric (and vice versa) subject to factory return and updated technical file.

Security

- Ø 125 mm nylon rear wheels with foot protection and brake.
- Device to prevent the stacker from tipping over in the event of an obstacle on the descent path.
- Complies with the Machine Directive 2006/42/EC and ISO 3691-5.

Maintenance and warranty

- 3 or 10 year warranty depending on model, excluding parts subject to wear and tear.
- Maintenance contract on request: service provided by our teams. Subscription possible for new or existing Manuvit equipment.

Moreover, as nothing should justify throwing away a product under the pretext that it is damaged, we are able to put back in use all the materials of our manufacture and this, without limit of duration.

Complies with the Machinery Directive 2006/42/EC.



Levfix 300 manual / Equipped with 2 position plate accessories with sliding forks



Levfix 300 manual / Equipped with coil turning attachment



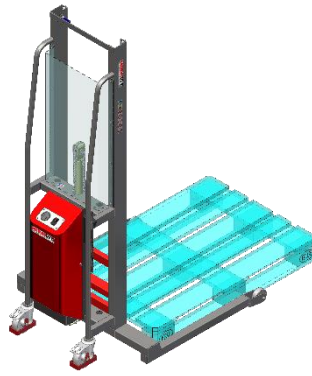
Levfix 300 semi-electric with pallet runners / Equipped with automatic gripper attachment

The different spars

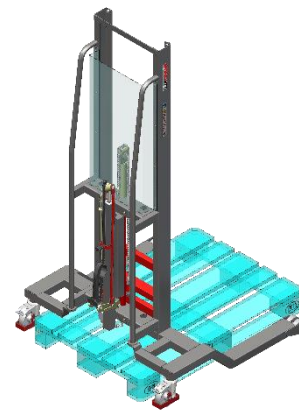
- Standards.
- Framers: allow you to come and frame a palette.
- Pallet passes: allow you to pass over a pallet to pick up a load (drum, coil, etc.) located at the bottom of the pallet.



Standard



Supervisors



Pallet hanger

Technical specifications

References	Capacity (kg)	Version		Lifting stroke (mm)	Lifting speed	Height. HT (mm)	Spacing of longitudinal members (mm)	Front wheels	Weight (kg)	Warranty (years)				
800 000 0083	300 ⁽¹⁾	Manuel	Standard spars	Bogie rollers	1350	40 or 70 mm/pump	1930	580	Ø 80 mm nylon	89	10			
800 000 0085				Fixed rollers			1930	580		88				
800 000 0089				Front swivel castors			1950	600	Ø 75 mm nylon	87				
800 000 0086			Framing spars	Fixed roller			1930	860	Ø 80 mm nylon	96				
800 000 0088			Pallet runners	Fixed twin rollers			2020	900		101				
800 100 0082		Semi-electric ⁽³⁾	Standard spars	Bogie rollers		1350	135 mm/s	1930	580	Ø 75 mm nylon		132	3	
800 100 0084				Fixed rollers				1930	580			136		
800 100 0088				Front swivel castors				1950	600	Ø 75 mm nylon		134		
800 100 0085				Framing spars				Fixed roller	1930	860		Ø 80 mm nylon		144
800 100 0087				Pallet runners				Fixed twin rollers	2020	1100				149
800 000 0091	600 ⁽²⁾	Manuel	Standard spars	Bogie rollers	1350	20 or 35 mm/pump	1930	580	Ø 80 mm nylon	115	10			
800 000 0095				Fixed rollers			1950	600		Ø 75 mm nylon		114		
800 000 0094			Front swivel castors	1950			600	Ø 75 mm nylon	117					
800 000 0093			Framing spars	Fixed roller			2020	1100	Ø 80 mm nylon	125				
800 100 0091		Semi-electric ⁽⁴⁾	Standard spars	Bogie rollers		1350	135 mm/s	1930		580	Ø 80 mm nylon	147	3	
800 100 0095				Fixed rollers				1930	580	146				
800 100 0094			Front swivel castors	1950				600	Ø 75 mm nylon	149				
800 100 0093			Framing spars	Fixed roller				2020	1100	Ø 80 mm nylon	158			

⁽¹⁾ 300 kg capacity at 350 mm from masts according to ISO 3691-5

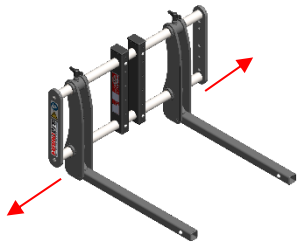
⁽²⁾ 600 kg capacity at 500 mm from masts according to ISO 3691-5

⁽³⁾ 12 VDC battery, built-in 12 VDC charger

⁽⁴⁾ Power supply: 24 VDC (2 x 12 VDC batteries), built-in 24 VDC charger

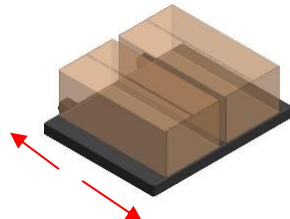
Accessories for 300 kg models

Non-exhaustive list of accessories, possibility of custom-made, consult us



Sliding forks

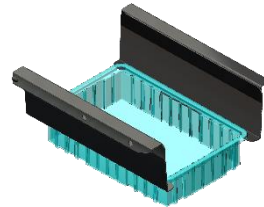
Adjustable in width from 160 to 520 mm.
Useful length: 435 mm.
In 30 mm square tube.



2 position tray

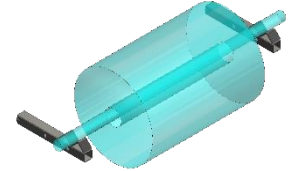
Clips onto the sliding forks. Allows the accessory to be positioned further or further away from the door leaf. The 2 positions are obtained by push buttons.
Dimensions: 500 x 450 mm.

Material: Stainless steel or steel



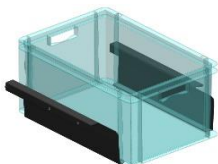
2 position plates

The bin can be picked up from below or from the edge.



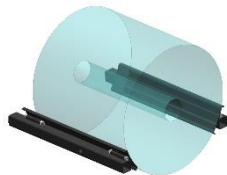
V" coil shaft supports

Allows the handling of a reel positioned on an axis.



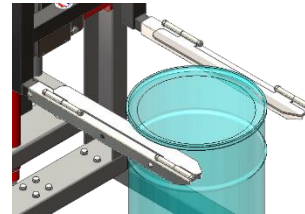
Sliding plates

For bins with or without rim.



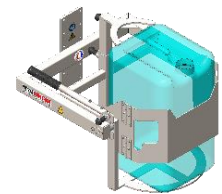
Tiltable sleeves

Allows handling of coils or drums.



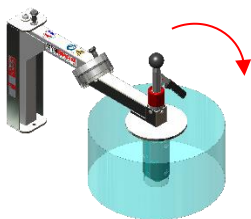
Tilting plates

For flanged drums Ø 600 mm.



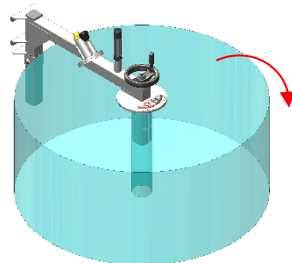
Rotobidon

Allows emptying of a canister. Capacity 60 kg (20-30 L drums) or 90 kg (60 L drums).



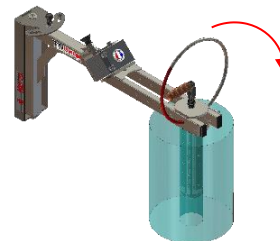
Manual clamshell turner for coils

For Ø 70 mm bore coils.



Manual handwheel coil turner

For Ø 70 mm bore coils.

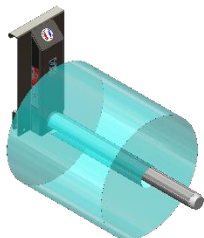


Automatic 2 axis gripper coil turner

For reels with bore Ø 70 to 156 mm depending on model.

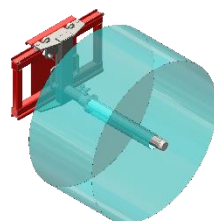


Removable bracket 150 kg



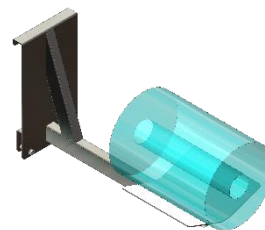
Fixed or folding spur

Bore from Ø 50 mm.



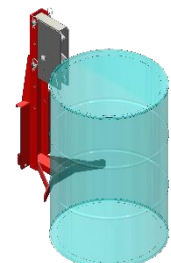
Sideshift spur

Bore from Ø 50 mm.



Rectangular spur with V-tray

For reels Ø 600 mm.

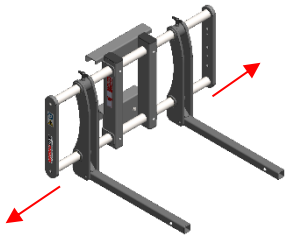


Automatic clamp holder 1 barrel

For metal or plastic drums, with rim, or for plastic drums with lid from 60 to 220 L.

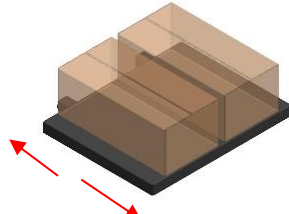
Accessories for 600 kg models

Non-exhaustive list of accessories, possibility of custom-made, consult us



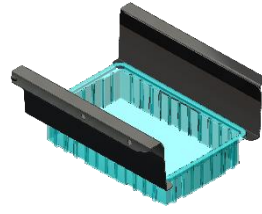
Sliding forks

Adjustable in width from 294 to 754 mm.
Useful length: 500 mm.
In 30 mm square tube.



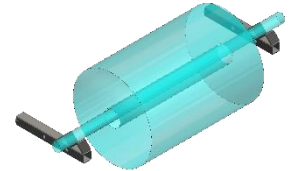
2 position tray

Clips onto the sliding forks. Allows the accessory to be positioned further or further away from the door leaf. The 2 positions are obtained by push buttons.
Dimensions: 500 × 450 mm.



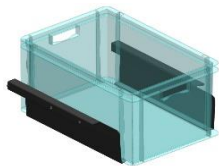
2 position plates

The bin can be picked up from below or from the edge.



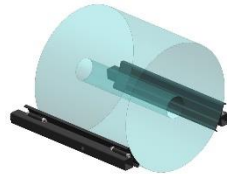
V" coil shaft supports

Allows the handling of a reel positioned on an axis.



Sliding plates

For bins with or without rim.



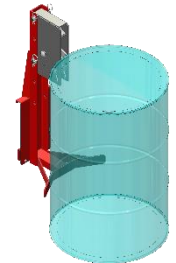
Tiltable sleeves

Allows handling of coils or drums.



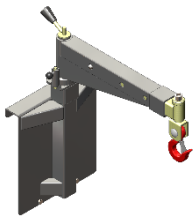
Tilting plates

Allows the use of metal or plastic drums with a maximum diameter of 580 mm.

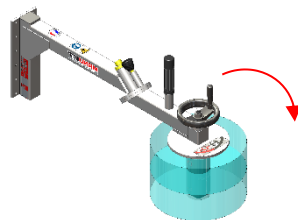


Automatic clamp holder 1 barrel

For metal or plastic drums, with rim, or for plastic drums with lid from 60 to 220 L.

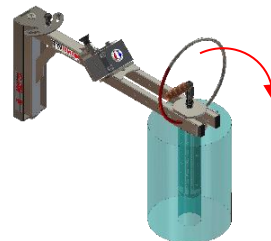


Removable bracket 400 kg



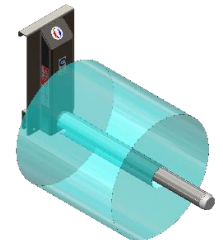
Manual handwheel or jaw coil turner

For Ø 70 mm bore coils.



Automatic 2 axis gripper coil turner

For reels with bore Ø 70 to 156 mm depending on model.



Fixed or folding spur

Bore from Ø 50 mm.

Options

- ATEX certification.
- Plexiglass allowing a clear view and isolating the operator from moving mechanical parts.
- Surface treatment: anti-corrosion, polyurethane paint, paint and food oil.
- Constant level cell.
- Change of wheel type.