



3 year
warranty



Demonstration
in video

A range of monomast stackers with manual movement and electric lift, designed to ensure ergonomic and safe use for professionals.

Light, handy and compact, they are available in steel/aluminium or 100% stainless steel.

They can be combined with a wide range of standard and customised accessories for drums, bins and reels....

Performance

- Robust construction suitable for intensive use.
- Lifting speed 150 or 165 mm/s with the possibility of custom programming.
- 10 h autonomy with 10 cycles/h for a 150 kg load and use between 10 and 20°.
- Batteries: AGM 2×12V 22Ah, recharge time: 4 h for 80% - 8h for 100%.

Versatility

- Kit for quick accessory change.

Security

- Rear wheels with foot protection.
- Device to prevent the stacker from tipping over in the event of an obstacle on the descent path.
- Complies with the Machine Directive 2006/42/EC and ISO 3691-5. Meets the recommendations of the CRAM R-367

Maintenance and warranty

- 3 year warranty excluding wearing parts.
- Maintenance contract on request: service provided by our teams. Subscription possible for new or existing Manuvit equipment.

Moreover, as nothing should justify throwing away a product under the pretext that it is damaged, we are able to put back in use all the materials of our manufacture and this, without limit of duration.

Complies with the Machinery Directive 2006/42/EC.

Meets the recommendations of the CRAM R-367.



Steel/ Equipped with spur accessory



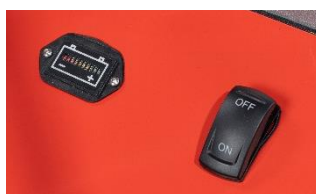
Stainless steel / Equipped with tray accessory



Stainless steel / Equipped with Rotobidon accessory



Remote control to manage the electric lift



Load indicator



Technical specifications

References	Material	Capacity (kg) *	Lifting stroke (mm)	Lifting speed	Dim. HT (mm) **	Usable spacing (mm) ***	Wheels	Wheel materials	Weight (kg)
800 100 0812	Steel / aluminium	80	1200	150 mm/s	964 x 584 x 1580	430	Pivoting	Polyurethanes	64
800 100 0816			1600		964 x 584 x 1980				68
800 100 1512		150	1200	165 mm/s	1007 x 587 x 1580		Fixed front		73
800 100 1516			1600		1007 x 587 x 1980				81
800 100 1520			2000		1007 x 587 x 2380				92
800 100 2012		200	1200		1007 x 587 x 1580				75
800 100 2016			1600		1007 x 587 x 1980				83
800 100 2020			2000		1007 x 587 x 2380				94
800 101 0812	Stainless steel	80	1200	150 mm/s	964 x 584 x 1580		Pivoting	Polyamide	76
800 101 0816			1600		964 x 584 x 1980				80
800 101 1512		150	1200	165 mm/s	1007 x 587 x 1580		Fixed front		86
800 101 1516			1600		1007 x 587 x 1980				94
800 101 1520			2000		1007 x 587 x 2380				105
800 101 2012		200	1200		1007 x 587 x 1580				92
800 101 2016			1600		1007 x 587 x 1980				100
800 101 2020			2000		1007 x 587 x 2380				107

* Capacity at 250 mm of the masts according to ISO 3691-5

** Depth x Width x Height

*** Lengths (mm)

Accessories



Quick release (fixed part)

Fits on the mast of the stacker. To be ordered with the stacker.

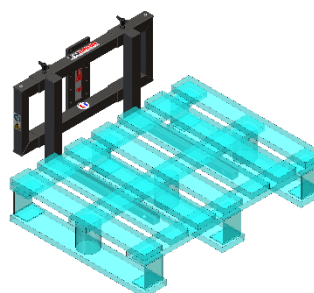
Material: Stainless steel



Quick-release fastener (moving part)

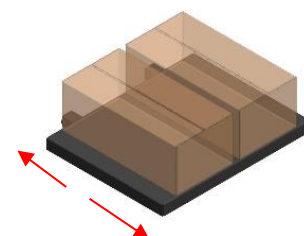
Fits onto the accessory and then snaps onto the fixed part. To be ordered with each accessory.

Material: Stainless steel



Adjustable steel forks

Forks in 30 x 30 mm square tube. Length: 442 mm. Adjustable spacing from 190 to 430 mm.

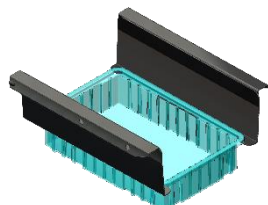


2 position tray

Clips onto the sliding forks. Allows the accessory to be positioned further or further away from the door leaf. The 2 positions are obtained by push buttons.

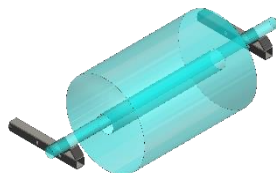
Dimensions: 500 x 450 mm.

Accessories



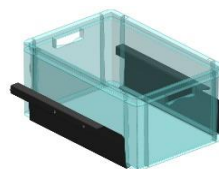
2 position plates

The bin can be picked up from below or from the edge.



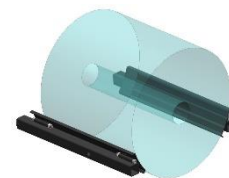
V'' coil shaft supports

Allows the handling of a reel positioned on an axis.



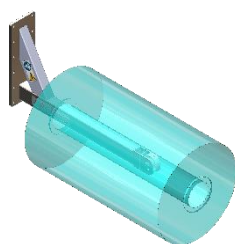
Sliding plates

For bins with or without rim.



Tiltable sleeves

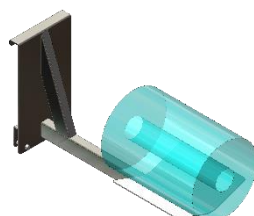
Allows handling of coils or drums.



Roller spur

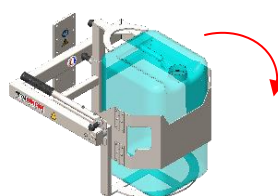
Allows the movement of coils with a minimum bore of 53 to 65 mm.

Material: Stainless steel



Rectangular spur with V-tray

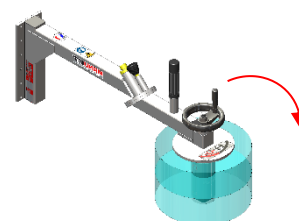
For reels Ø 600 mm.



Rotobidon

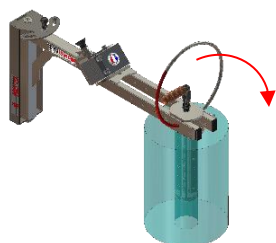
Allows emptying of a canister. Capacity 60 kg (20-30 L drums) or 90 kg (60 L drums).

Material: Steel



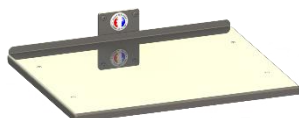
Manual handwheel or jaw coil turner

For Ø 70 mm bore coils.



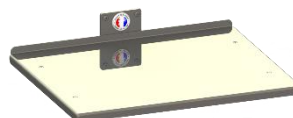
Automatic 2 axis gripper coil turner

For reels with bore Ø 70 to 156 mm depending on model.



Stainless steel tray

Dimensions: 500 × 400 mm.
Capacity 100 kg



Stainless steel tray with constant level

Dimensions: 500 × 400 mm.
Detection height (from floor): 760 mm to 1300 mm.

Please consult us for any request involving loads of different materials and/or colours to be detected.